



2910 Main Street  
Buffalo, New York 14214  
T 866.898.5529  
F 716.836.8069  
[www.GreatAthleticFields.com](http://www.GreatAthleticFields.com)

October 29, 2015

Mrs. Deborah Leh  
Superintendent of Schools  
Wheatland Chili CSD  
13 Beckwith Ave.  
Scottsville, NY 14546

**Re: Assessment of Soccer Fields**

Dear Deborah,

As discussed during our meeting on October 15<sup>th</sup>, I returned to the school on October 19<sup>th</sup> to survey the fields. During the process we examined the existing grades and elevations, dimensions of the fields, and examined the fields for overall safety and playability. I also reviewed the notes from Michael Ebertz from SEI design group. Our notes and summary are below. Please feel free to contact me for further discussion or if there is anything else Great Lakes Athletic Fields can do to help.

- All of the comments in the SEI audit are accurate, some of the dimensions they provided in 2013 differ slightly from our measurements, but all sizes fit into an acceptable range. We measured the width they were missing for the existing field at 221 feet.
- The comments on the National Federation of State High School Athletic Associations diagram are current and both fields are native soil and surface drained. I searched the Section V website and the NYSPHAA website for rules on fields and did not find any that differ. They may exist but I could not find them. Most leagues follow the national regulations, which are referenced in the SEI documents.
- Both fields are safe for competitive use and have good turf density. Weed coverage on either field is low.
- The grade on the North field is in a North to South direction and is approx. 0.5% slope from the North goal to mid field, and 0.94% from mid field to the South end. Overall the South end is approx. 2 ft. 8 inches lower than the North end, this was elevation is based on the middle of each goal, on the goal line. From sideline to sideline the north end line is consistent. From mid

Member  
NYSTA  
STMA  
STMONT



2910 Main Street  
Buffalo, New York 14214  
T 866.898.5529  
F 716.836.8069  
[www.GreatAthleticFields.com](http://www.GreatAthleticFields.com)

field to the South end the grade starts to pitch toward the South West corner. Both end lines have irregularities that go beyond the tolerances but do not create an unsafe situation.

- The South Field is an Engineered, native soil, surface drained field. Sideline to sideline grade at mid field is 1.5%, at both end lines it is .5% and from mid field to each end line .8%

#### Summary-

Both fields meet the minimum requirements for competitive play. Both fields are safe for use. In regards to competitive matches in playoff or tournament situations the South field would provide more consistency in regards to both teams playing with the same field conditions regardless of which direction they are playing. On the North field one team will be playing uphill during each half.

Great Lakes Athletic Fields, Inc. is pleased to assist Wheatland Chili CSD. Thank you for the opportunity.

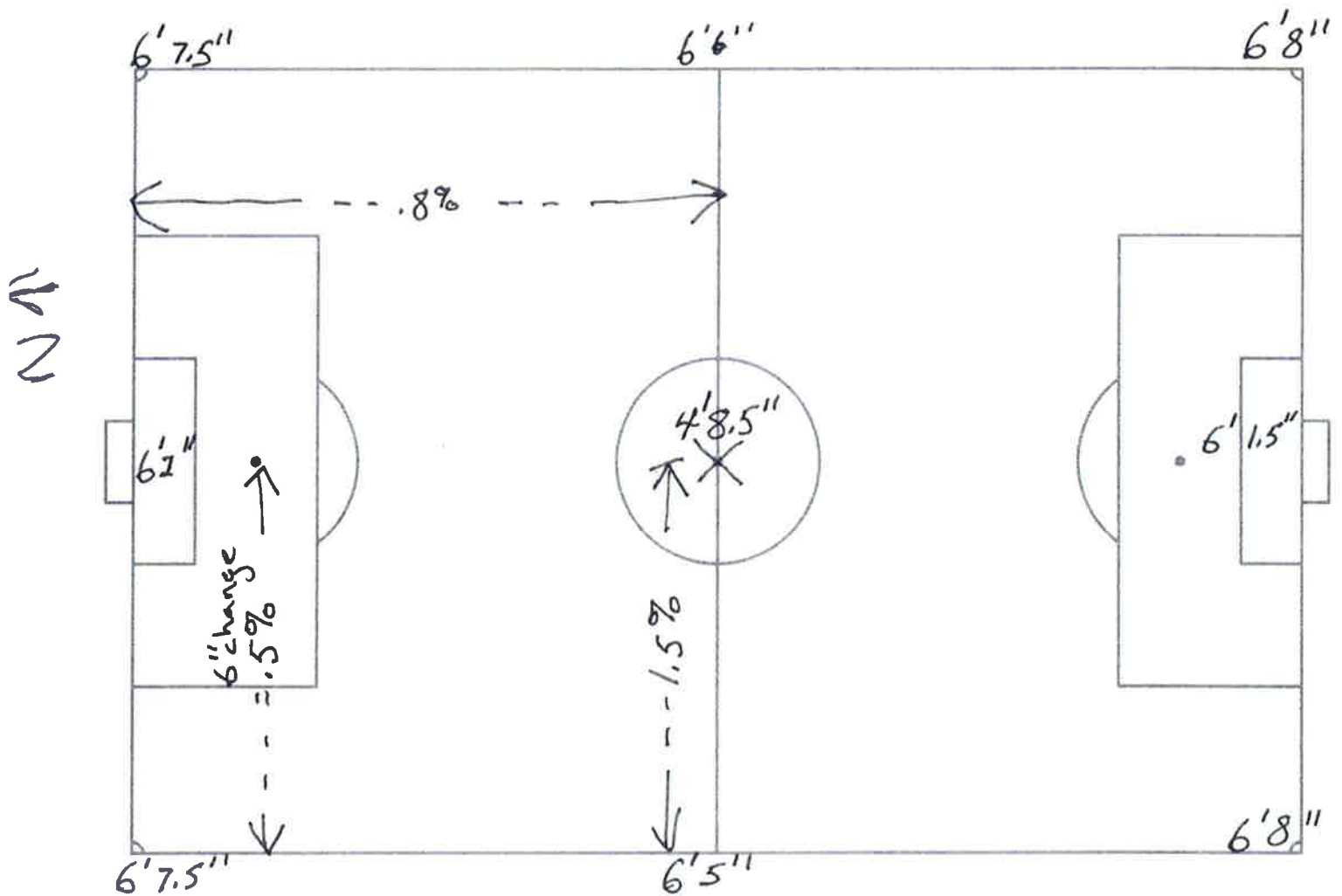
Sincerely,

Alan Dungey, CSFM  
Great Lakes Athletic Fields, Inc.

Member  
NYSTA  
STMA  
STMONY

# South Field

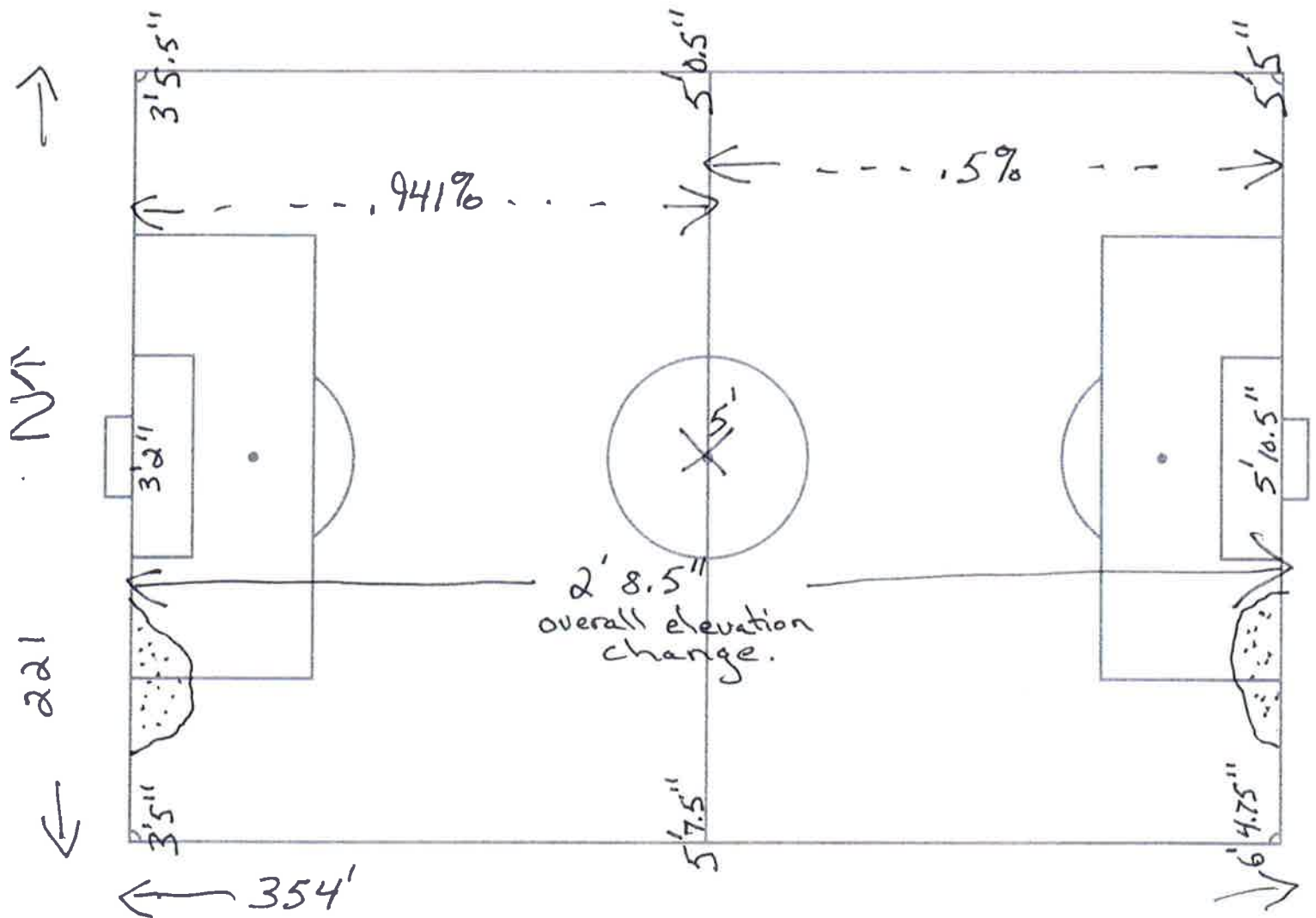
## Great Lakes Athletic Fields



- station placed at mid Field (X) - set to 4' 8.5"

# North Field

## Great Lakes Athletic Fields



- station placed at mid Field (X) - set to 5'
- higher # means lower elevation
- (dotted) irregular grade areas
- South East Corner is higher than mid field.

# RE: Meeting to Discuss Athletic Lights

Michael J. Ebertz <mje@seidesigngroup.com>

Tue 5/21/2013 4:28 PM

To: Deborah Leh <Deborah\_Leh@wheatland.k12.ny.us>; Brad Moreland <bjm@seidesigngroup.com>;

📎 2 attachments

Soccer field dims.pdf; Preliminary Soccer Layout.pdf;

Hi Deb,

Our field efforts Friday afternoon essentially confirm Pete's preliminary sketch (attached). Our findings are as follows:

- Soccer field along North Rd. measures 354' long. Width is unknown as it is not striped.
- Soccer field within the track is partially striped and measures 223' wide x 356' long.
- The maximum size field recommended by the National Federation of State HS Associations is 225' wide x 360' long (also attached).

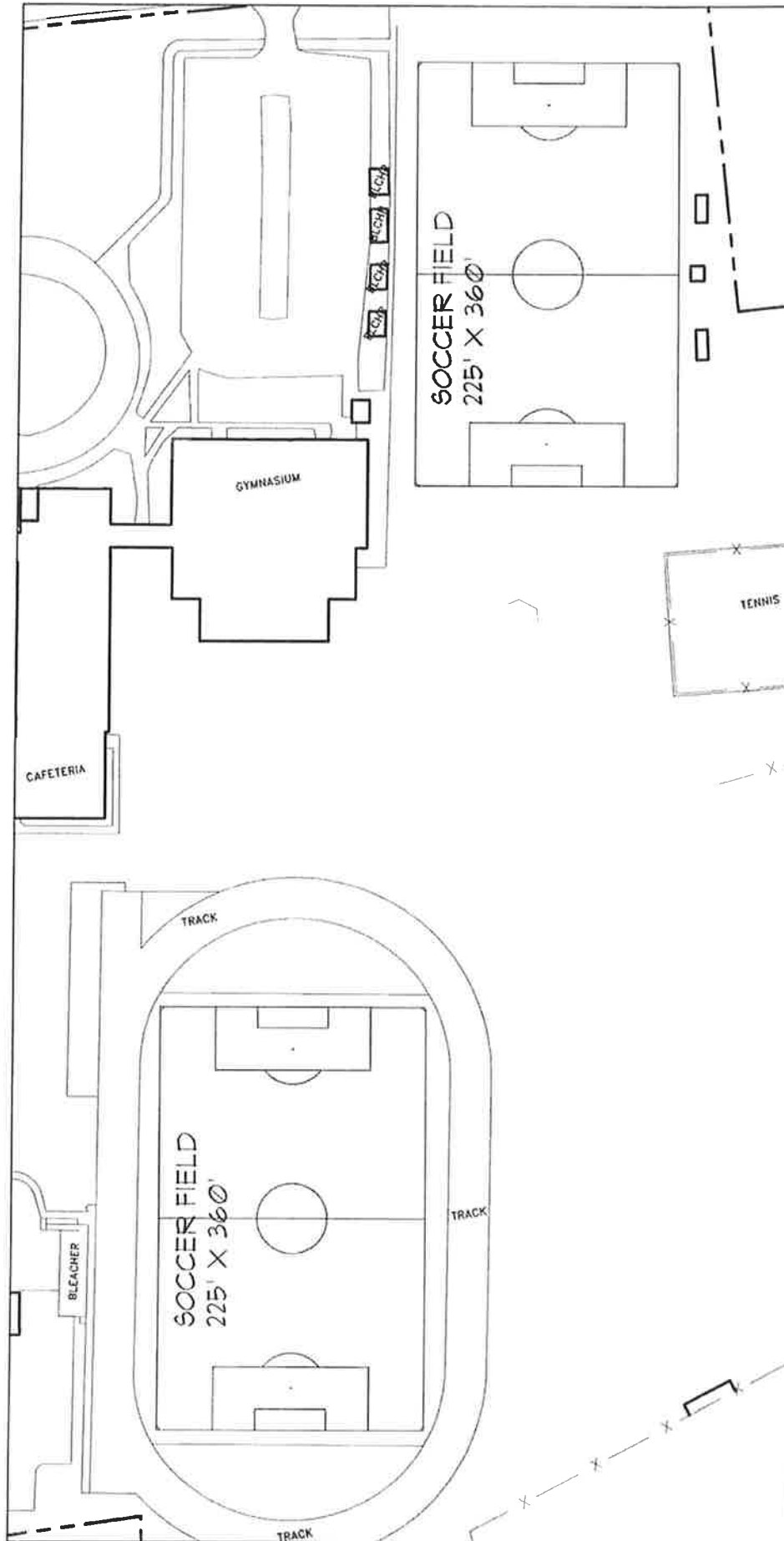
**Michael J. Ebertz, AIA**

Senior Principal

**SEI design group**

224 Mill Street

Rochester, NY 14614



NOTE: THESE MEASUREMENTS WERE TAKEN FROM OLD DRAWINGS AND THERE MAY BE DISCREPANCIES IN ACTUAL DIMENSIONS, THESE ARE THE BEST AVAILABLE AT THIS TIME

## PRELIMINARY SOCCER FIELD LAYOUT

WHEATLAND-CHILI



**design group**  
ARCHITECTURE • PLANNING • CONSULTING

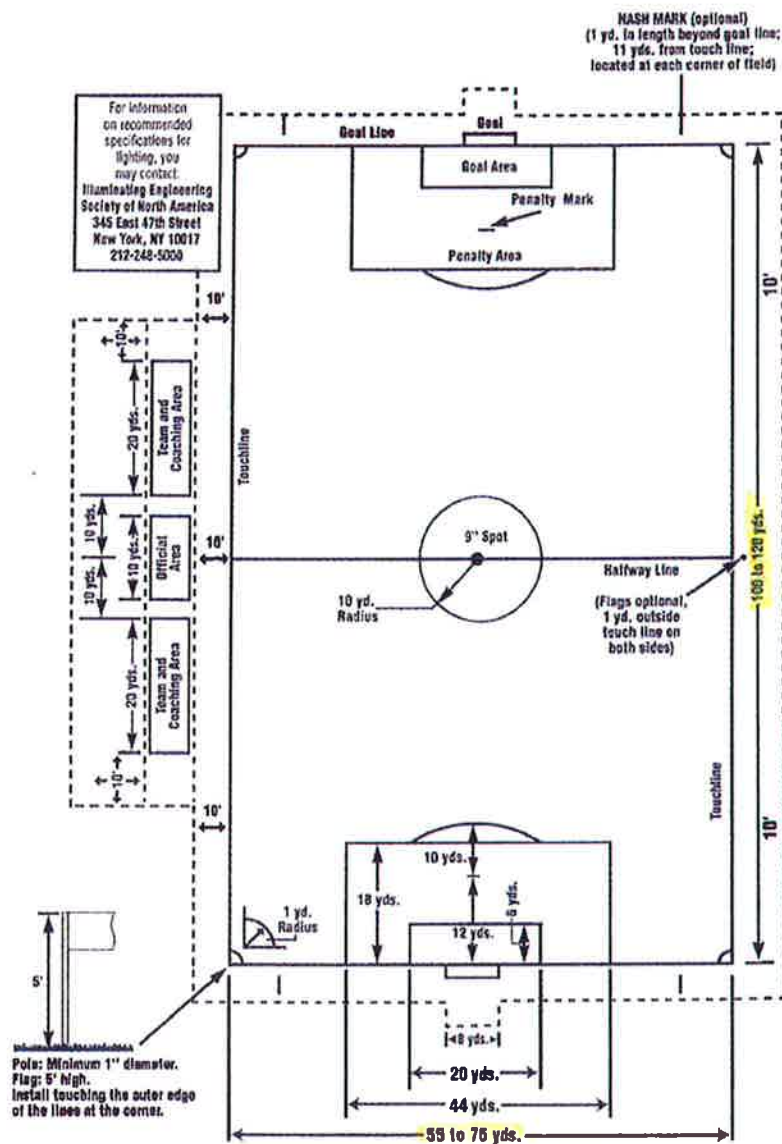


SCALE IN FEET  
0 40 80 120

appel  
osborne  
landscape  
architecture

1400 US 301 Street SE, Portland, ME 04106  
Tel: 207.633.1234 Fax: 207.633.1235  
www.apel-osborne.com

# SOCCER



An engineered soccer field should have a minimum of one-and-one-half percent slope on fields which are surface drained and made up of native soil. For fields with underground drainage the slope should be no less than one percent slope. Slope is measured from center to side. Under no circumstances should a soccer field be flat. For more information, contact Pam Scott, Design Architects, 816-842-5200.